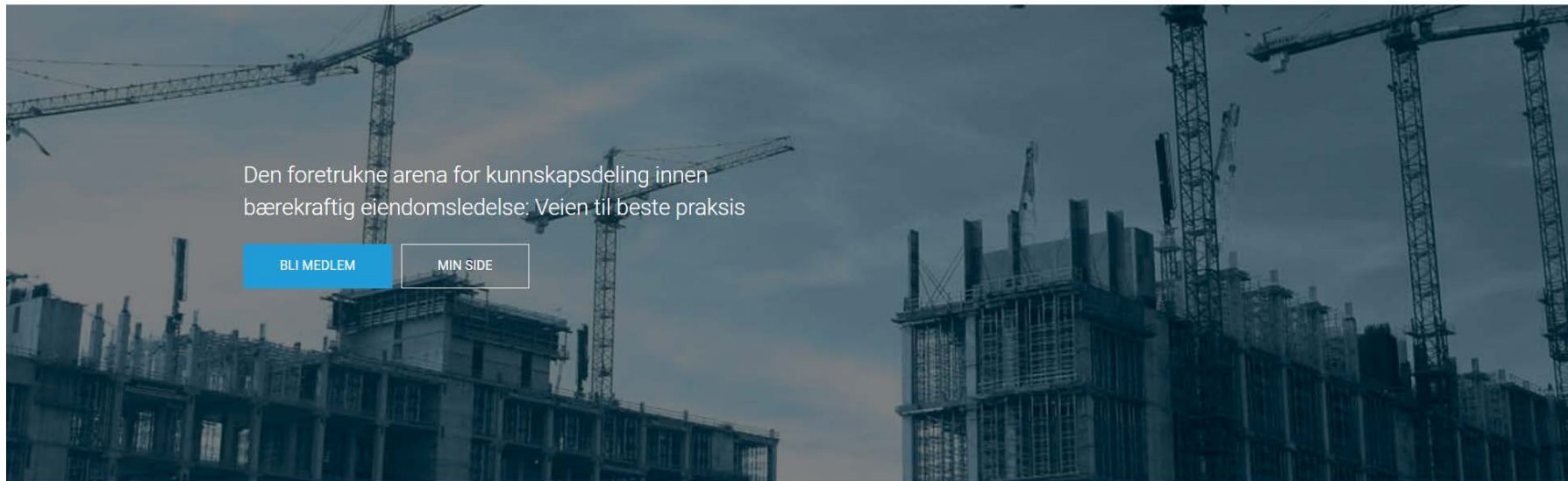




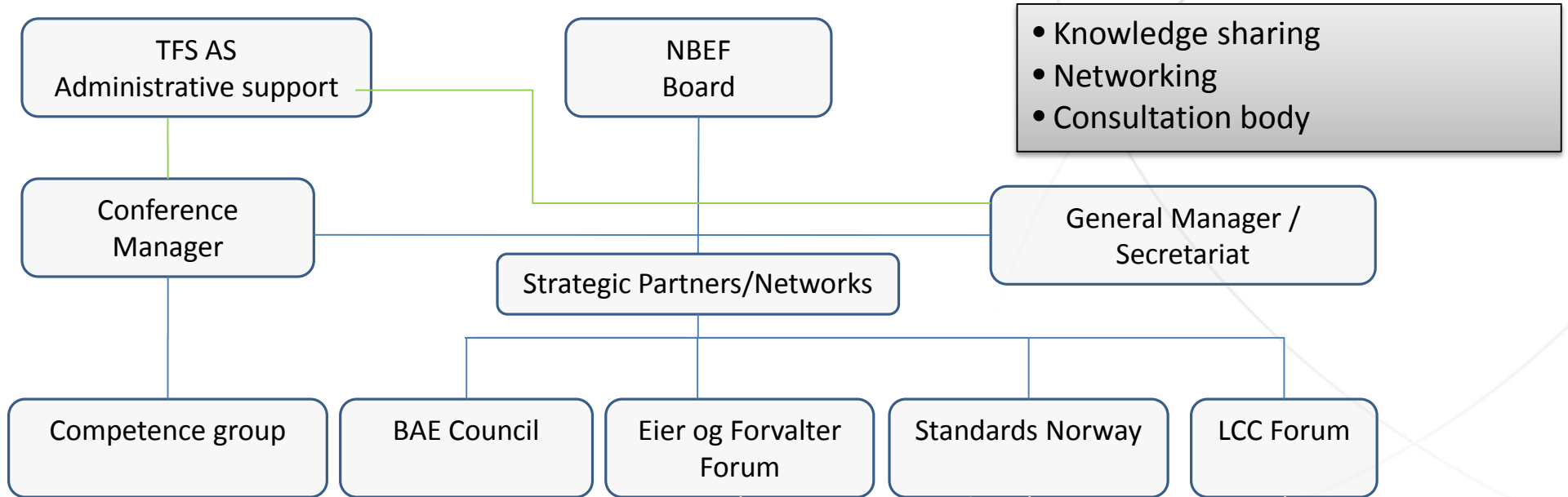
NBEF: Who we are



A brief presentation of the Norwegian Facilities Management Association (NBEF) www.nbef.no



Norwegian Facilities Management Association NBEF



- Knowledge sharing
- Networking
- Consultation body

Corporate Members (150)

- State Facility Owners
- Municipalities and Counties
- Hospitals
- Universities and Colleges
- Tennant organisations
- Private Facility Owners
- Facility Landlords/Real Estate Developers
- Consulting Engineers and Service Providers

Seminar and Conference attendees (1600)

- OpenBIM, decision support and LCC principles
- Strategic FM, workplace configuration
- Hand over and technical due diligence
- Maintenance Planning and Technical Operation
- Energy and Quality Management
- New Planning and Building Regulations
- SHA in the building process
- Standards



.. 145 corporate members in many sectors

<http://nbef.no/medlem/medlemsoversikt>



The purpose of NBEF is to..

- **Gather and organize** construction clients, institutions and individuals in the property and facilities management
- **Assist members** to maintain and develop values and to create and enhance value and efficiency gains for its members through cooperation and networking
- **Define and set the agenda** for the construction client, owner and management role and be a driving force to give members influence the design of business framework, laws and regulations.
- **Develop and promote** professional standards in best practice and convey the real estate sector impact on society, with close contact and dialogue with academic and research community



LCC Forum – a driving force led by NBEF

- The forum started in autumn 2010, consists of 28 organizations.
- The start of a national effort with broad participation - both from the building owner and procurement side and engineering-/construction side.
- Focus on procurement competency is an important objective in the forum so that the life cycle planning and LCC assessment is done in a professional manner, and including according to the Law on Public Procurement



www.lccforum.no

NordicFM and EuroFM

- NordicFM is a professional network with members from all five Nordic countries.
- Work conducted in workshops addressing relevant topics of mutual interest for discussion and study and experience.
- At EFMC 2013 in Prague, we reported on a survey of target groups in the Nordic countries on **“Leadership challenges in FM”**
- At EFMC 2014 in Berlin, we had a presentation on **“LCC as an innovative tool through the pases..”**
- NBEF is a member of **EuroFM** and had representatives at the EFMC Conference 2011 in Vienna, 2012 in Copenhagen, 2013 in Prague, 2014 in Berlin and 2015 in Glasgow.

